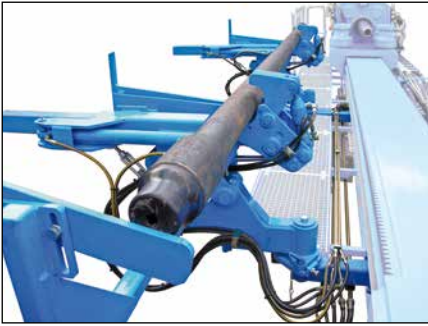


HDD Accessories

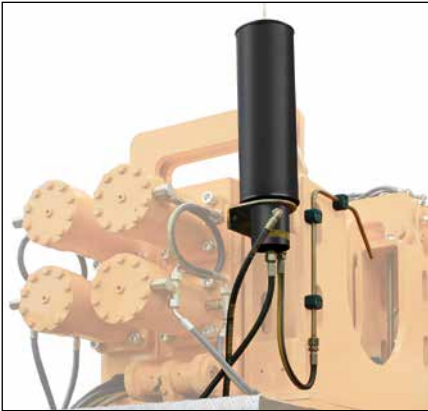


Contents	Pos.	Page
Additional components		
HDD rigs	1-11	3-5
Directional drill rods, drill rod boxes and rod grippers	12-14	5
Drill bits	15-19	6
Bent subs, sonde housings and non-magnetic components	20-23	7
Measurement and steering systems	24-29	8-9
Reaming tools and spare parts	30-35	10-11
Swivel, cross over and check valves	36-47	12-14
Several additional components	48-53	15
Spare parts HDD rigs	54-61	16-17
Spare parts bentonite pumps	62-67	18-19
Accessories bentonite pumps	68-74	20
Spare parts mixing units	75-79	21
Spare parts recycling units	80-86	22-24



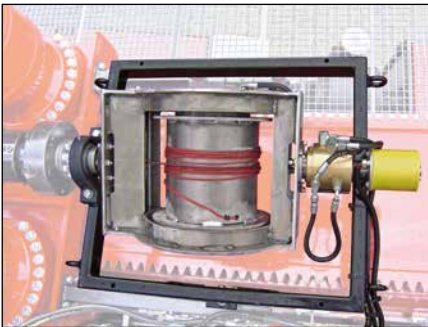
1. Drill rod supplies

part no.	for Ø	for length	loading capacity
GZ-100-0926	88.9 mm/ 3 1/2"	5,000 mm/ 9,600 mm	5 pcs
GZ-100-0914	127 mm/ 5"	5,000 mm/ 9,600 mm	5 pcs
GZ-100-07-0075	168.3 mm/ 6 5/8"	5,000 mm/ 9,600 mm	4 pcs



2. Drill rod lubrication

part no.	drive	output	package size
PD-022-10000	hydraulic	1 cm ³ /pass	4 kg



3. Cable reel passes

part no.	kind of drive	drum Ø	cable length
PD-400-0700-0	mechanical	70/350 mm	500 m
PD-400-0700-1	hydraulic	260/330 mm	100 m

Spare parts

part no.	components		
PD-179-10001	rubber ball		
PD-179-10010	rotary transmission leadthrough		
PD-179-10000	slip ring body		



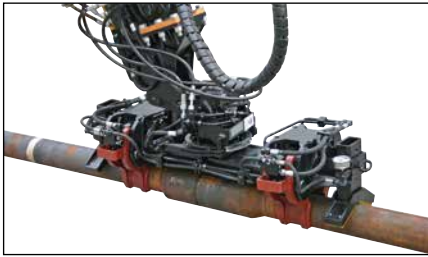
4. Drill data transmission systems

part no.	slip ring Ø		
PD-250-08-01-28	250 mm		
PD-100-08-01-28	208 mm		
PD-80-08-01-28	163 mm		



5. Drill rod cranes

part no.	extension hydr./mech.	capacity	weight
PD-210-10003	3.15 m / 4.2 m	1.7 tm	210 kg
PD-210-10001	6 m / 9.3 m	3.5 tm	510 kg
PD-210-10000	7.4 m / 9.5 m	5 tm	760 kg
PD-210-10002	9.8 m / 11.9 m	10 tm	1,230 kg
PD-210-10004	15.1 m / 17.4 m	13 tm	2,130 kg
PD-210-10005	15.1 m / 17.4 m	15 tm	2,260 kg



6. Drill rod grippers 3D

part no.	gripping Ø	bearing load	
GR-20-0015	88.9 mm/ 3 1/2"	1,000 kg	
GR-20-0001	127 mm/ 5"	1,000 kg	
GR-20-0011	168.3 mm/ 6 5/8"	1,000 kg	



7. Drill rod magazines

part no.	drill rod length	thread connection Ø	quantity
PD-07-01-01	5,000 mm	2 7/8" IF	16 pcs
PD-07-01-02	6,000 mm	2 7/8" IF	16 pcs
PD-07-01-03	5,000 mm	3 1/2" IF	16 pcs
PD-07-01-04	6,000 mm	3 1/2" IF	16 pcs
PD-07-01-05	5,000 mm	4 1/2" IF	12 pcs
PD-07-01-06	6,000 mm	4 1/2" IF	12 pcs



8. Drill data loggings

part no.	digital logging data	unit	
PD-318-10000	pull force	kN	
	feeding	kN	
	speed	r/min	
	torque	kNm	
	bentonite quantity	l/min	
	bentonite pressure	bar	
	feeding speed	m/min	
	drill length	m	
	PD-318-10001	as PD-318-10000 including modem for remote transmission	



9. Clamping devices at the power rotary heads

part no.	clamping Ø	drill rods	
KV-75-0130-023	105 - 215 mm	2 7/8" IF / 3 1/2" IF	
KV-150-0135-041	105 - 215 mm	4 1/2" IF	
PD-250-12-01-19	127 - 254 mm	6 5/8" FH	



10. High pressure purifier

part no.	kind of drive	output	operating pressure
PD-021-10003	hydraulic	14.6 l/min.	140 bar



11. Bentonite supplies

part no.	bentonite gate	supply / forwarding Ø	bypass Ø
PD-170-10000	2"	2" / 2"	2"
PD-170-10001	3"	3" / 2 x 2"	2"
PD-170-10002	4"	4" / 4 x 2"	2"
PD-170-10003	5"	5" / 6 x 2"	2"



12. Drill rods

part no.	size	rod length (mm)	thread connection Ø	weight
PD-253-10002	3 1/2"	5,000 mm	2 7/8" IF	115 kg
PD-253-10007	3 1/2"	6,000 mm	2 7/8" IF	130 kg
PD-253-10003	3 1/2"	5,000 mm	3 1/2" IF	125 kg
PD-253-10008	3 1/2"	6,000 mm	3 1/2" IF	140 kg
PD-253-10004	5"	5,000 mm	4 1/2" IF	190 kg
PD-253-10009	5"	6,000 mm	4 1/2" IF	205 kg
PD-253-10024	6 5/8"	9,600 mm	4 1/2" IF	315 kg
PD-253-10025	6 5/8"	9,600 mm	6 5/8" FH	485 kg

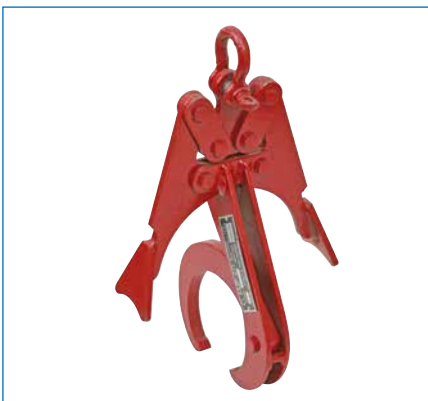
Copper paste

part no.	description	weight		
PD-142-10000	drill rod grease	23 kg		



13. Drill rod boxes

part no.	for rod length	thread Ø	quantity
PD-259-10007	5,000 mm	2 7/8" IF	30 pcs
PD-259-10008	6,000 mm	2 7/8" IF	30 pcs
PD-259-10009	5,000 mm	3 1/2" IF	20 pcs
PD-259-10010	6,000 mm	3 1/2" IF	20 pcs
PD-259-10011	5,000 mm	4 1/2" IF	12 pcs
PD-259-10012	6,000 mm	4 1/2" IF	12 pcs



14. Drill rod grippers

part no.	rod Ø	lifting capacity	
PD-254-10005	88.9 mm / 3 1/2"	205 kg	
PD-254-10007	127 mm / 5"	340 kg	
PD-254-10008	168.3 mm / 6 5/8"	500 kg	

15. Roller bits

soft – medium-hard ground

part no.	Ø	external thread Ø	weight
PD-252-10020	4 ¾" / 120 mm	2 7/8" Reg	9 kg
PD-252-10021	6 ¼" / 158 mm	3 ½" IF	23 kg
PD-252-10022	8 ½" / 216 mm	4 ½" Reg	43 kg
PD-252-10023	9 7/8" / 250 mm	6 5/8" Reg	67 kg

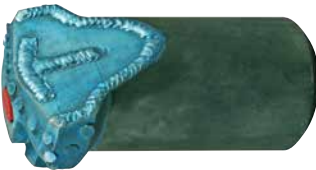


middle-hard ground

PD-252-10024	4 ¾" / 120 mm	2 7/8" Reg	9 kg
PD-252-10025	6 ¼" / 158 mm	3 ½" IF	25 kg
PD-252-10026	8 ½" / 216 mm	4 ½" Reg	45 kg
PD-252-10027	9 7/8" / 250 mm	6 5/8" Reg	70 kg

hard ground

PD-252-10028	4 ¾" / 120 mm	2 7/8" Reg	9 kg
PD-252-10029	6 ¼" / 158 mm	3 ½" IF	25 kg
PD-252-10030	8 ½" / 216 mm	4 ½" Reg	45 kg
PD-252-10031	9 7/8" / 250 mm	6 5/8" Reg	70 kg



16. Deflect drill bits standard

part no.	Ø	internal thread Ø	weight
BW-01-01-15	5 ½" / 140 mm	2 7/8" Reg	13 kg
BW-01-01-14	6 ½" / 160 mm	3 ½" IF	24 kg
BW-01-01-13	7 7/8" / 200 mm	4 ½" Reg	47 kg



17. Deflect drill bits with exchangeable plate

part no.	Ø	internal thread Ø	weight
BW-01-01-11	5 ½" / 140 mm	2 7/8" Reg	21 kg
BW-01-01-09	6 ½" / 160 mm	3 ½" IF	34 kg
BW-01-01-03	7 7/8" / 200 mm	4 ½" Reg	63 kg



18. Deflect drill bits with round shaft chisel

part no.	Ø	internal thread Ø	weight
BW-01-01-10	5 ½" / 140 mm	2 7/8" Reg	13 kg
BW-01-01-08	6 ½" / 160 mm	3 ½" IF	23 kg
BW-01-01-06	7 7/8" / 200 mm	4 ½" Reg	49 kg



19. Deflect drill bits with diamond facing

part no.	Ø	internal thread Ø	weight
BW-01-01-16	3 ¾" / 80 mm	2 7/8" Reg	
BW-01-01-17	3 ½" / 90 mm	3 ½" IF	

20. Bent subs



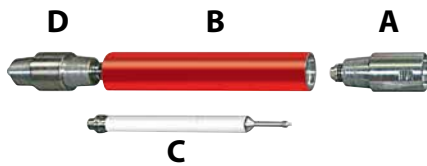
part no.	Ø	thread box-box Ø	weight
PD-255-10000	4 1/8" / 105 mm	2 3/8" Reg - 2 7/8" Reg	30 kg
PD-255-10001	4 3/4" / 120 mm	3 1/2" IF - 3 1/2" Reg	110 kg
PD-255-10002	6 1/2" / 165 mm	4 1/2" Reg - 4 1/2" Reg	160 kg

21. Sonde housings complete



part no.	Ø	thread box-pin Ø	weight
PD-251-10001	4 1/8" / 105 mm	2 3/8" IF - 2 3/8" Reg	35 kg
PD-251-10002	4 3/4" / 120 mm	3 1/2" IF - 3 1/2" IF	58 kg
PD-251-10003	6 1/2" / 165 mm	4 1/2" IF - 4 1/2" Reg	90 kg

consisting in:



part no.	Ø	components	(D / B / A / C)
PD-251-10006	4 1/8" / 105 mm	rear cap	A
PD-251-10007	4 3/4" / 120 mm	rear cap	A
PD-251-10008	6 1/2" / 165 mm	rear cap	A
PD-251-10009	4 1/8" / 105 mm	liner	B
PD-251-10010	4 3/4" / 120 mm	liner	B
PD-251-10005	6 1/2" / 165 mm	liner	B
PD-251-10011	4 1/8" / 105 mm	sonde capsule	C
PD-251-10012	4 3/4" / 120 mm	sonde capsule	C
PD-251-10000	6 1/2" / 165 mm	sonde capsule	C
PD-251-10013	4 1/8" / 105 mm	front cap	D
PD-251-10014	4 3/4" / 120 mm	front cap	D
PD-251-10015	6 1/2" / 165 mm	front cap	D



22. Mud motors

part no.	external Ø	flow rate (l/min)	Rotary speed (rpm)	torque (Nm)	power (kW)	length (mm)
PD-256-10000	6 1/2" / 6,75"	1,136 - 2,271	60 - 162	5,640 - 4,474	35 - 67	8,426

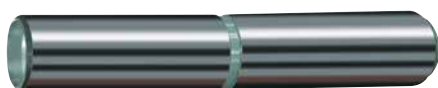
further mud motors on enquiry



23. Non magnetic drill rods

part no.	rod Ø	thread Ø	length	weight
PD-253-10012	4 1/8" / 105 mm	2 7/8" IF pin-box	4,500 mm	100 kg
PD-253-10013	4 3/4" / 120 mm	3 1/2" IF pin-box	4,500 mm	400 kg
PD-253-10014	6 3/4" / 170 mm	4 1/2" IF pin-box	4,500 mm	650 kg
PD-253-10015	8" / 203 mm	6 3/8" Reg pin-box	9,000 mm	2,050 kg

Non magnetic bent subs



part no.	rod Ø	thread Ø		
PD-253-10030	4 1/8" / 105 mm	2 7/8" IF pin-box		
PD-253-10031	4 3/4" / 120 mm	3 1/2" IF pin-box		
PD-253-10032	6 3/4" / 170 mm	4 1/2" IF pin-box		
PD-253-10033	8" / 203 mm	6 3/8" Reg pin-box		



24. F2 locating system

part no.	components		
PD-257-10020	receiver		
PD-257-10021	display		
PD-257-10022	battery charger		
PD-257-10023	repair kit		
PD-257-10024	tool set		



25. Eclipse locating system

part no.	components		
PD-257-10005	receiver		
PD-257-10006	display		
PD-257-10007	battery charger		
PD-257-10008	repair kit		
PD-257-10009	tool set		



26. Transmitter Mark I, II, III, F2

part no.	transmitter type (colour)	length x Ø	signal range	type of battery	nominal temperature (max.)	weight
PD-257-10010	transmitter yellow	38 x 3.125 cm	12.2 m	2 x alkali	104 °C	635 g
PD-257-10011	transmitter red short	38 x 3.125 cm	21.3 m	2 x alkali	104 °C	635 g
PD-257-10012	transmitter red long	48 x 3.125 cm	21.3 m	4 x alkali	104 °C	840 g
PD-257-10013	cable transmitter green	38 x 3.125 cm	42.7 m	12 V a 28 V DC	82 °C	545 g
PD-257-10025	transmitter grey	48 x 3.125 cm	25.9 m	Supercell	104 °C	840 g

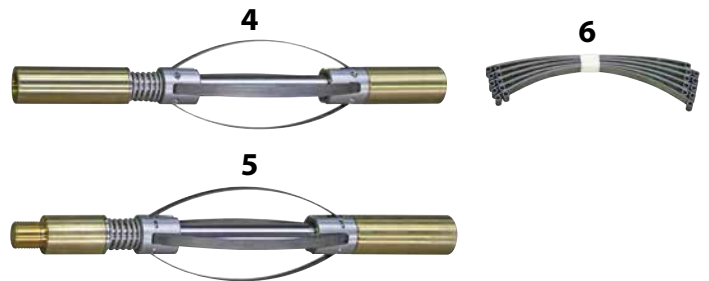


27. Transmitter Eclipse

part no.	transmitter type (colour)	length x Ø	signal range	type of battery	nominal temperature (max.)	weight
PD-257-10014	transmitter black	38 x 3.125 cm	15.2 m	2C-cell alkaline	104 °C	635 g
PD-257-10015	transmitter lilac	38 x 3.125 cm	15.2 / 31.3 m	2C-cell alkaline	104 °C	635 g
PD-257-10016	cable transmitter black	48 x 3.125 cm	30.5 m	12 V a 28 V DC	82 °C	840 g

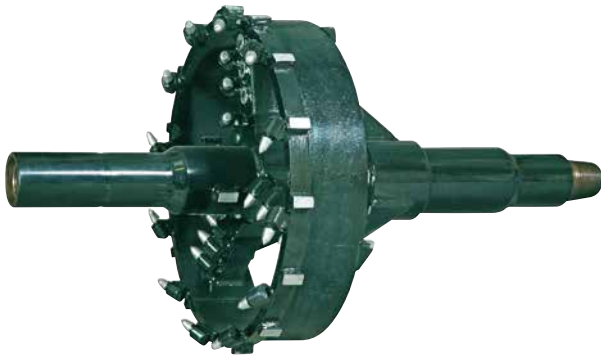
28. Control unit

part no.	description	fig. no.	
PD-257-10017	interface	1	
PD-257-10018	drillers console	2	
PD-257-10036	steering tool	3	
PD-257-10019	upper centering	4	
PD-257-10020	lower centering	5	
PD-257-10022	replacement spring	6	
PD-257-10021	wet connector	7	
PD-257-10023	pack offs	8	
PD-257-10026	probe case	9	
PD-257-10024	cable drum	10	
PD-257-10025	ampere strippers	11	



29. Measurement cable components

part no.	description	fig. no.	
PD-257-10027	measurement cable	1	
PD-257-10028	butt connector	2	
PD-257-10029	shrink hose	3	
PD-257-10030	insulation strippers	4	
PD-257-10031	crimper	5	
PD-257-10032	hot air gun	6	
PD-257-10033	spider for 2 7/8" IF rods	7	
PD-257-10034	spider for 3 1/2" IF rods	8	
PD-257-10035	spider for 4 1/2" IF rods	9	



30. Fly-Cutters

part no.	Ø	thread pin x box
PD-105-0300	300 mm	2 7/8" IF
PD-278-0450	450 mm	2 7/8" IF
PD-278-0600	600 mm	2 7/8" IF
PD-278-0750	750 mm	2 7/8" IF
PD-105-0900	900 mm	2 7/8" IF
PD-312-0300	300 mm	3 1/2" IF
PD-312-0450	450 mm	3 1/2" IF
PD-312-0600	600 mm	3 1/2" IF
PD-312-0750	750 mm	3 1/2" IF
PD-312-0900	900 mm	3 1/2" IF
PD-312-1050	1,050 mm	3 1/2" IF
PD-165-0400	400 mm	4 1/2" IF
PD-165-0600	600 mm	4 1/2" IF
PD-165-0800	800 mm	4 1/2" IF
PD-165-1000	1,000 mm	4 1/2" IF
PD-165-1200	1,200 mm	4 1/2" IF
PD-165-1400	1,400 mm	4 1/2" IF
PD-165-1600	1,600 mm	4 1/2" IF
PD-658-0600	600 mm	6 5/8" FH
PD-658-0800	800 mm	6 5/8" FH
PD-658-1000	1,000 mm	6 5/8" FH
PD-658-1200	1,200 mm	6 5/8" FH
PD-658-1400	1,400 mm	6 5/8" FH
PD-658-1600	1,600 mm	6 5/8" FH
PD-658-1800	1,800 mm	6 5/8" FH

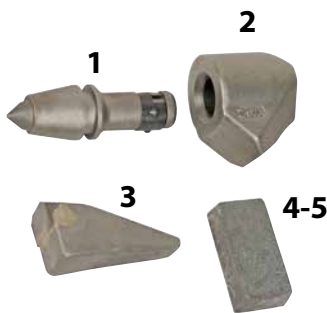
31. Barrel-Reamers

part no.	Ø	thread pin x box
br-10-01-01/1	300 mm	2 7/8" IF
br-10-01-02/1	450 mm	2 7/8" IF
br-10-01-03/1	450 / 600 mm	2 7/8" IF
br-10-01-04/1	600 / 750 mm	2 7/8" IF
br-10-01-05/1	750 / 900 mm	2 7/8" IF
br-10-01-01/2	300 mm	3 1/2" IF
br-10-01-02/2	450 mm	3 1/2" IF
br-10-01-03/2	450 / 600 mm	3 1/2" IF
br-10-01-04/2	600 / 750 mm	3 1/2" IF
br-10-01-05/2	750 / 900 mm	3 1/2" IF
br-10-01-06/2	900 / 1,050 mm	3 1/2" IF
br-10-01-02/3	400 mm	4 1/2" IF
br-10-01-03/3	400 / 600 mm	4 1/2" IF
br-10-01-04/3	600 / 800 mm	4 1/2" IF
br-10-01-06/3	800 / 1,000 mm	4 1/2" IF
br-10-01-08/3	1,000 / 1,200 mm	4 1/2" IF
br-10-01-09/3	1,200 / 1,400 mm	4 1/2" IF
br-10-01-10/3	1,400 / 1,600 mm	4 1/2" IF
br-11-01-01	600 mm	6 5/8" FH
br-11-01-02	600 / 800 mm	6 5/8" FH
br-11-01-03	800 / 1,000 mm	6 5/8" FH
br-11-01-04	1,000 / 1,200 mm	6 5/8" FH
br-11-01-05	1,200 / 1,400 mm	6 5/8" FH
br-11-01-06	1,400 / 1,600 mm	6 5/8" FH
br-11-01-07	1,600 / 1,800 mm	6 5/8" FH



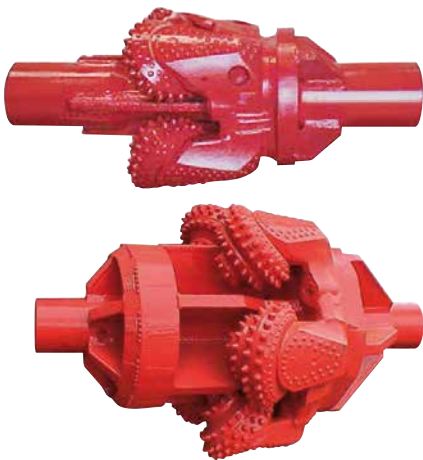
32. Nozzles

part no.	nozzle Ø		
PD-153-10007	3 mm		
PD-153-10008	4 mm		
PD-153-10005	5 mm		
PD-153-10004	6 mm		
PD-153-10009	7 mm		
PD-153-10003	8 mm		
PD-153-10010	9 mm		
PD-153-10000	10 mm		
PD-153-10006	nozzle key		



33. Hard metal facings

part no.	type of facing	sizes	fig. no.
PD-150-10002	round shaft chisel	Ø 18.65/16 x 83.5 mm	1
PD-150-10001	chisel holder	Ø 42 mm	2
PD-150-10003	hard metal tooth	65 x 31 x 25 mm	3
PD-150-10000	wearing plate	19 x 25 x 51 mm	4
PD-150-10008	wearing plate	19 x 25 x 100 mm	5



34. Hole Openers with TCI bits

for hard and solid geological formation

part no.	Ø	thread pin x box Ø	
PD-802-10000	8 ¾" / 222 mm	2 7/8" Reg	
PD-802-10001	10" / 254 mm	2 7/8" Reg	
PD-802-10002	12" / 305 mm	2 7/8" Reg	
PD-802-10003	15" / 380 mm	3 ½" IF	
PD-802-10004	17 ½" / 445 mm	3 ½" IF	
PD-802-10005	20" / 508 mm	3 ½" IF	
PD-802-10006	22" / 559 mm	3 ½" IF	
PD-802-10007	24" / 610 mm	4 ½" IF	
PD-802-10008	26" / 660 mm	4 ½" IF	
PD-802-10009	30" / 762 mm	4 ½" IF	



35. Milled Tooth Hole Openers

for soft geological formation

part no.	Ø	thread pin x box Ø	
PD-802-10010	15" / 381	6 5/8" Reg	
PD-802-10011	17 ½" / 445	6 5/8" Reg	
PD-802-10012	20" / 508	6 5/8" Reg	
PD-802-10013	26" / 660	7 5/8" Reg	
PD-802-10014	30" / 762	7 5/8" Reg	
PD-802-10015	36" / 914	7 5/8" Reg	
PD-802-10016	42" / 1,067	7 5/8" Reg	
PD-802-10017	48" / 1,220	7 5/8" Reg	
PD-802-10018	54" / 1,372	7 5/8" Reg	
PD-802-10019	60" / 1,524	7 5/8" Reg	



36. Swivel: spade x spade

part no.	max. tensile load	weight	
PD-250-10004	25 t	39 kg	
PD-250-10005	32 t	68 kg	
PD-250-10006	50 t	113 kg	
PD-250-10007	65 t	172 kg	



37. Swivel: spade x box

part no.	max. tensile load	thread connection Ø	weight
PD-250-10008	25 t	2 7/8" IF	43 kg
PD-250-10009	25 t	3 1/2" IF	45 kg
PD-250-10010	32 t	3 1/2" IF	80 kg
PD-250-10011	32 t	4 1/2" IF	82 kg
PD-250-10012	50 t	4 1/2" IF	114 kg
PD-250-10013	65 t	4 1/2" IF	177 kg
PD-250-10000	100 t	4 1/2" IF	190 kg
PD-250-10002	150 t	4 1/2" IF	260 kg
PD-250-10003	200 t	6 3/8" Reg	390 kg
PD-250-10001	320 t	7 3/8" Reg	770 kg
PD-250-10014	450 t	7 3/8" Reg	1,230 kg
PD-250-10015	640 t	7 3/8" Reg	1,880 kg



38. Cardan links

part no.	max. tensile load		
PD-250-10017	25 t		
PD-030-12704	32 t		
PD-060-12710	50 t		
PD-075-16816	65 t		
PD-075-20610	100 t		
PD-165-27501	150 t		
PD-05-0001	200 t		
PD-0350-23501	320 t		
PD-05-0018	450 t		
PD-05-0019	640 t		



39. Cross over: spade x box

part no.	max. tensile load	thread connection Ø	
PD-030-10502	25 t	2 7/8" IF	
PD-05-0020	25 t	3 1/2" IF	
PD-030-12702	32 t	3 1/2" IF	
PD-05-0021	32 t	4 1/2" IF	
PD-055-127-02	50 t	4 1/2" IF	
PD-075-16817	65 t	4 1/2" IF	
PD-05-0036	100 t	4 1/2" IF	
PD-05-0022	150 t	6 3/8" Reg	
PD-05-0023	200 t	6 3/8" Reg	
PD-05-0024	320 t	7 3/8" Reg	
PD-05-0025	450 t	7 3/8" Reg	
PD-05-0026	640 t	7 3/8" Reg	



40. Cross over: spade x pin

part no.	max. tensile load	thread connection Ø	
PD-030-10501	25 t	2 7/8" IF	
PD-05-0027	25 t	3 1/2" IF	
PD-030-12701	32 t	3 1/2" IF	
PD-05-0028	32 t	4 1/2" IF	
PD-05-0029	50 t	4 1/2" IF	
PD-05-0030	65 t	4 1/2" IF	
PD-05-0037	100 t	4 1/2" IF	
PD-05-0031	150 t	6 5/8" Reg	
PD-05-0032	200 t	6 5/8" Reg	
PD-05-0033	320 t	7 5/8" Reg	
PD-05-0034	450 t	7 5/8" Reg	
PD-05-0035	640 t	7 5/8" Reg	



41. Saver subs: pin x pin

part no.	for HDD type	thread Ø	usable length
PD-bk18-0124	PD 40	2 7/8" IF	200 mm
PD-060-12706	PD 60	3 1/2" IF	200 mm
PD-bk100-0128	PD 80 - 150	4 1/2" IF	250 mm
PD-bk67-0125	PD 200 - 460	6 5/8" FH	300 mm



42. Double sockets: box x box

part no.	thread Ø	usable length	
PD-030-10507	2 7/8" IF	300 mm	
PD-60-012705	3 1/2" IF	430 mm	
PD-75-16805	4 1/2" IF	480 mm	
PD-220-20334	5 1/2" IF	450 mm	
PD-220-20303	6 5/8" FH	450 mm	



43. Cross over: outside x inside

part no.	thread Ø	usable length	
PD-030-10503	2 7/8" IF - 2 7/8" IF	200 mm	
PD-060-12703	3 1/2" IF - 3 1/2" IF	200 mm	
PD-075-16807	4 1/2" IF - 4 1/2" IF	250 mm	
PD-02-0031	5 1/2" IF - 5 1/2" IF	300 mm	
PD-220-20318	6 5/8" FH - 6 5/8" FH	300 mm	



44. Cross over: box x pin

part no.	thread Ø	usable length	
PD-030-10504	2 7/8" IF - 2 7/8" IF	200 mm	
PD-060-12713	2 7/8" IF - 3 1/2" IF	220 mm	
PD-075-16820	2 7/8" IF - 4 1/2" IF	290 mm	
PD-02-0013	2 7/8" IF - 5 1/2" IF	450 mm	
PD-220-20315	2 7/8" IF - 6 5/8" FH	400 mm	
PD-060-12714	3 1/2" IF - 2 7/8" IF	220 mm	
PD-060-12709	3 1/2" IF - 3 1/2" IF	220 mm	
PD-075-16808	3 1/2" IF - 4 1/2" IF	250 mm	
PD-02-0014	3 1/2" IF - 5 1/2" IF	300 mm	
PD-02-0015	3 1/2" IF - 6 5/8" FH	300 mm	
PD-075-16809	4 1/2" IF - 2 7/8" IF	290 mm	
PD-075-16813	4 1/2" IF - 3 1/2" IF	250 mm	
PD-075-16811	4 1/2" IF - 4 1/2" IF	250 mm	
PD-020016	4 1/2" IF - 5 1/2" IF	300 mm	
PD-220-20307	4 1/2" IF - 6 5/8" FH	405 mm	
PD-02-0017	5 1/2" IF - 2 7/8" IF	300 mm	
PD-02-0018	5 1/2" IF - 3 1/2" IF	300 mm	
PD-02-0019	5 1/2" IF - 4 1/2" IF	300 mm	
PD-02-0020	5 1/2" IF - 5 1/2" IF	300 mm	
PD-02-0021	5 1/2" IF - 6 5/8" FH	300 mm	
PD-220-20326	6 5/8" FH - 2 7/8" IF	225 mm	
PD-02-0022	6 5/8" FH - 3 1/2" IF	300 mm	
PD-220-20305	6 5/8" FH - 4 1/2" IF	300 mm	
PD-02-0023	6 5/8" FH - 5 1/2" IF	300 mm	
PD-220-21602	6 5/8" FH - 6 5/8" FH	300 mm	
PD-02-0007	4 1/2" IF - 6 5/8" Reg	300 mm	
PD-02-0008	5 1/2" IF - 6 5/8" Reg	300 mm	
PD-02-0009	6 5/8" FH - 6 5/8" Reg	300 mm	
PD-02-0010	4 1/2" IF - 7 5/8" Reg	300 mm	
PD-02-0011	5 1/2" IF - 7 5/8" Reg	300 mm	
PD-02-0012	6 5/8" FH - 7 5/8" Reg	300 mm	



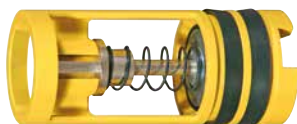
45. Cross over for check valve: (box side)

part no.	thread Ø	usable length	
PD-030-10505	2 7/8" IF - 2 7/8" IF	290 mm	
PD-060-12704	3 1/2" IF - 3 1/2" IF	320 mm	
PD-075-16801	4 1/2" IF - 4 1/2" IF	480 mm	
PD-02-0026	5 1/2" IF - 5 1/2" IF	500 mm	
PD-220-20330	6 5/8" FH - 6 5/8" FH	590 mm	



46. Cross over for check valve: (pin side)

part no.	thread Ø	usable length	
PD-02-0024	2 7/8" IF - 2 7/8" IF	300 mm	
PD-060-12707	3 1/2" IF - 3 1/2" IF	320 mm	
PD-075-16802	4 1/2" IF - 4 1/2" IF	480 mm	
PD-02-0025	5 1/2" IF - 5 1/2" IF	450 mm	
PD-220-20329	6 5/8" FH - 6 5/8" FH	450 mm	



47. Check valves for cross over

part no.	thread Ø	usable length	
PD-041-10000	2 7/8" IF	48.42 x 158.75 mm	
PD-041-10035	3 1/2" IF	61.12 x 165.10 mm	
PD-041-10013	4 1/2" IF	88.12 x 211.14 mm	
PD-041-10036	5 1/2" IF	98.43 x 254 mm	
PD-041-10009	6 5/8" FH	121.44 x 298.45 mm	



48. Breakout units

part no.	clamp Ø	drill rods	breaking torque
SK-100-01-12	76 - 210 mm	2 7/8" - 3 1/2"	75 kN/m
SK-075-01-12	89 - 310 mm	4 1/2"	100 kN/m
SK-150-12-02-12	89 - 410 mm	6 5/8"	180 kN/m

49. Ridgid tongs

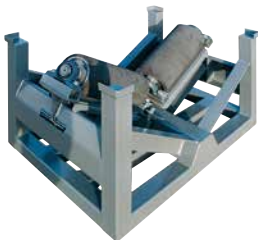


part no.	size	grip Ø	torque max.	weight
PD-254-10009	24" steel	3"	3,163 Nm	2.7 kg
PD-254-10003	36" aluminium	4"	2,825 Nm	5.0 kg
PD-254-10010	36" steel	4"	5,141 Nm	8.7 kg
PD-254-10011	48" aluminium	6"	5,254 Nm	8.4 kg
PD-254-10000	48" steel	6"	5,875 Nm	15.6 kg
PD-254-10002	60" steel	8"	6,779 Nm	23.3 kg

50. Chain tongs with hydraulic operation

part no.	grip Ø	torque max.	weight
PD-254-10013	2 1/8" - 4 7/8"	10,000 Nm	100 kg
PD-254-10012	3 1/4" - 5 1/4"	20,000 Nm	140 kg
PD-254-10001	4" - 8 1/4"	67,800 Nm	260 kg
PD-254-10004	4" - 12"	122,000 Nm	370 kg

51. Roller block



part no.	loading weight max.	diameter max.
PD-158-10000	10,000 kg	1,200 mm

52. Roller cradles



part no.	size
PD-158-10001	6 - 12"
PD-158-10002	12 - 24"
PD-158-10003	24 - 36"
PD-158-10004	36 - 48"
PD-158-10005	48 - 62"

53. Transfer pumps



part no.	output	engine capacity
PD-023-10002	500 - 1,000 l/min	30 kW
PD-023-10001	1,000 - 1,500 l/min	37 kW
PD-023-10000	2,000 - 2,500 l/min	55 kW

Spare parts HDD rigs

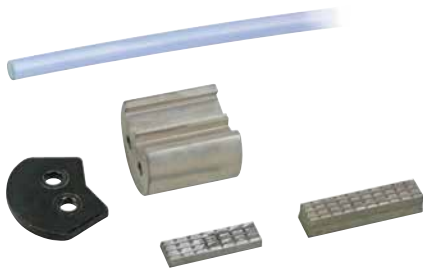


54. Clamping jaws complete



part no.	size	drilling rig	
PD-150-12-01-24	Ø 100 x 99 mm	PD 32 - PD 100	
PD-150-12-01-13	Ø 100 x 132 mm	PD 150 - PD 200	
PD-450-12-01-13	Ø 120 x 132 mm	PD 250 - PD 600	

55. Clamping jaw spare parts



clamping jaw part no.	size
PD-152-10000	Ø 100 x 99 mm
PD-151-10000	Ø 100 x 132 mm
PD-151-10002	Ø 120 x 132 mm

holding disc part no.	for Ø
kv25-0116	100 mm
kv100-0156-2	120 mm

tong dies part no.	size
PD-151-10000	½" - 1 ¼" - 3 ⅞"
PD-151-10001	1" - 1 ¼" - 3 ⅞"
PD-151-10002	½" - 1 ¼" - 5"
PD-151-10003	1" - 1 ¼" - 5"

safety string part no.	size
PD-190-10000	Ø 8 x 1,000 mm



56. Guidance rollers

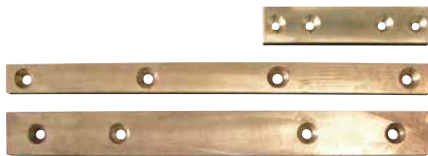
part no.	Ø	drilling rig	
PD-131-10001	107.7 mm	PD 32 - PD 150	
PD-131-10004	123 mm	PD 100 Z	
PD-131-10006	149 mm	PD 200 - PD 600	

57. Slide bars

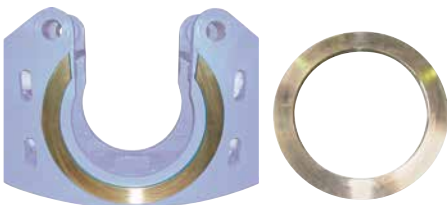


part no.	size	drilling rig	
PD-75-1304	107.7 mm	PD 32 - PD 150	
PD-250-16-01-21	149 mm	PD 200 - PD 600	

Slide bar sets



part no.	size	drilling rig	
PD-75-13020/21	107.7 mm	PD 32 - PD 150	
PD-250-16-0131/33	149 mm	PD 200 - PD 600	



58. Slide rings for clamping and breaking units

part no.	Ø	drilling rig	
PD-191-10002	420 / 340-30 mm	PD 32 - PD 50	
PD-191-10004	499 / 381-25 mm	PD 60 - PD 80	
PD-191-10000	599 / 481-18 mm	PD 100 - PD 600	



Spare parts HDD rigs



59. Mud swivel: thread version



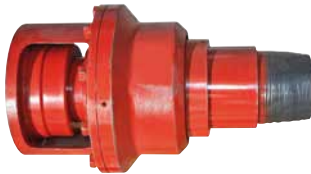
part no.	thread Ø	type	
PD-179-10013	2"	PD-R-2"	
PD-179-10007	3"	PD-R-3"	
PD-179-10008	4"	PD-R-4"	

flange version



part no.	flange Ø	type	
PD-179-10009	2"	PD-R-2"	
PD-179-10003	3"	PD-E-3"	
PD-179-10002	4"	PD-E-4"	

flange-thread version



part no.	Ø	type	
PD-179-21021	2"	PD-W-3"	
PD-179-10020	4"	PD-W-4"	

mud swivel seal kits



part no.	for Ø	type	
PD-179-10012	2"	PD-R-2"	
PD-179-10015	3"	PD-R-3"	
PD-179-10018	4"	PD-R-4"	
PD-179-10012	2"	PD-R-2"	
PD-179-10005	3"	PD-E-3"	
PD-179-10004	4"	PD-E-4"	
PD-179-10023	3"	PD-W-3"	
PD-179-10024	4"	PD-W-4"	

60. Rod strippers



part no.	Ø	for pipe Ø	
PD-259-1004	9"	1 ¼" - 3 ½"	
PD-259-10017	10"	2 ¾" - 4 ½"	
PD-259-1005	11"	1 ¼" - 5 ½"	
PD-259-10018	14"	2 ¾" - 5"	
PD-259-10019	17"	2 ¾" - 5"	

61. Rod guides



part no.	guidance Ø	for pipe Ø	
PD-290-0001	105 mm	2 7/8" IF	
PD-290-0002	127 mm	3 ½" IF	
PD-290-0003	165 mm	4 ½" IF	
PD-290-0005	283 mm	6 ¾" FH	

Spare parts bentonite pumps



62. Valves and seals for bentonite pumps FMC, PP 500



part no.	spare parts
PD-038-10011	liner 3"
PD-038-10009	piston 3"
PD-038-10010	rubber 3"
PD-038-10015	piston rod
PD-038-10016	intermediate rod
PD-038-10026	assembly tools

part no.	valves
PD-038-10013	suction valve
PD-038-10012	discharge valve

part no.	seals for
PD-038-10017	suction valve
PD-038-10024	discharge valve
PD-038-10025	piston rod
PD-038-10024	piston rod



63. Valves and seals for bentonite pumps FMC, PP 1000 – 2000



part no.	spare parts
PD-038-10019	liner 4"
PD-038-10005	piston 4"
PD-038-10004	rubber 4"
PD-038-10020	piston rod
PD-038-10021	intermediate rod
PD-038-10027	assembly toolsg

part no.	valves
PD-038-10002	suction valve
PD-038-10003	discharge valve

part no.	seals for
PD-038-10023	suction valve
PD-038-10022	discharge valve
PD-038-10001	piston rod
PD-038-10014	piston rod



64. Valves and seals for bentonite pumps Weatherford, PP 700



part no.	spare parts
PD-039-10009	liner 4"
PD-039-10016	piston 4"
PD-039-10010	rubber 4"
PD-039-10017	piston rod
PD-039-10018	intermediate rod
PD-039-10029	assembly tools

part no.	valve
PD-039-10008	discharge/suction valve

part no.	seals for
PD-039-10019	discharge/suction valve
PD-039-10020	piston rod





Spare parts bentonite pumps



65. Valves and seals for bentonite pumps Weatherford, PP 1000 - 1300



part no.	spare parts
PD-039-10001	liner 5"
PD-039-10021	piston 5"
PD-039-10005	rubber 5"
PD-039-10022	piston rod
PD-039-10023	intermediate rod
PD-039-10030	assembly tools

part no.	valve
PD-039-10003	discharge/suction valve

part no.	seals for
PD-039-10013	discharge/suction valve
PD-039-10024	piston rod



66. Valves and seals for bentonite pumps Weatherford, PP 1500 - 2500

part no.	spare parts
PD-039-10000	liner 6"
PD-039-10011	piston 6"
PD-039-10004	rubber 6"
PD-039-10025	piston rod
PD-039-10026	intermediate rod
PD-039-10031	assembly tools

part no.	valve
PD-039-10002	discharge/suction valve

part no.	seals for
PD-039-10027	discharge/suction valve
PD-039-10028	piston rod

67. Valves and seals for bentonite pumps PRIME DRILLING X-3000



part no.	spare parts
PD-036-10000	liner 6"
PD-036-10001	piston 6"
PD-036-10002	rubber 6"
PD-036-10003	piston rod
PD-036-10004	intermediate rod
PD-036-10005	assembly tools
PD-036-10009	liner 6 1/2"
PD-036-10010	piston 6 1/2"
PD-036-10011	rubber 6 1/2"
PD-036-10012	liner 7"
PD-036-10013	piston 7"
PD-036-10014	rubber 7"
PD-036-10015	liner 7 1/2"
PD-036-10016	piston 7 1/2"
PD-036-10017	rubber 7 1/2"

part no.	valve
PD-036-10006	discharge/suction valve

part no.	seals for
PD-036-10007	discharge/suction valve
PD-036-10008	piston rod

Accessories bentonite pumps



68 Liner wash pump

part no.	flow rate	voltage rating	
PD-021-10002	150 l/min	24 V	



69. Bentonite high pressure hoses including couplings

part no.	Ø x length		
PD-072-10003	2" x 5,000 mm		
PD-072-10004	2" x 10,000 mm		
PD-072-10005	3" x 5,000 mm		
PD-072-10006	3" x 10,000 mm		
PD-072-10000	4" x 5,000 mm		
PD-072-10007	4" x 10,000 mm		



70. Couplings for Bentonite high pressure hoses

part no.	for hose Ø		
PD-171-10005	2"		
PD-171-10014	3"		
PD-171-10013	4"		



71. Bentonite suction hoses incl. couplings

part no.	Ø x length		
PD-172-10008	3" x 10,000 mm		
PD-172-10009	4" x 10,000 mm		
PD-172-10010	5" x 10,000 mm		
PD-172-10011	6" x 10,000 mm		
PD-172-10012	8" x 10,000 mm		



72. Perrot quick couplings

part no.	for hose Ø		
PD-172-10013	3"		
PD-172-10014	4"		
PD-172-10015	5"		
PD-172-10016	6"		
PD-172-10017	8"		



73. Hose clamps for Perrot quick couplings

part no.	for hose Ø		
PD-172-10018	3"		
PD-172-10019	4"		
PD-172-10020	5"		
PD-172-10021	6"		
PD-172-10022	8"		



74. Bentonite filters

part no.	capacity		
PD-1000-01-01	800 - 1,500 l/min		
PD-1000-01-02	1,500 - 2,500 l/min		
PD-1000-01-03	3,000 - 3,500 l/min		





Spare parts mixing units



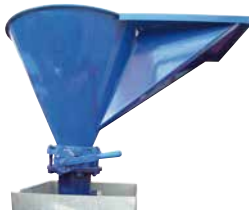
75. Agitator

part no.	power	nominal voltage	nominal speed
PD-160-10000	1.5 kW	400 V	710 1/min



76. Butterfly valves

part no.	Ø		
PD-169-10000	3"		
PD-169-10001	4"		
PD-169-10002	5"		
PD-169-10003	6"		



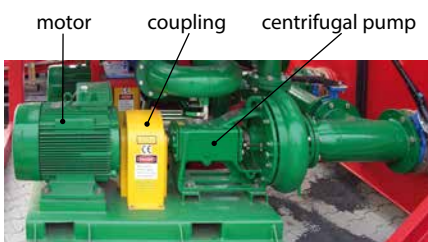
77. Mud hopper

part no.	hopper size Ø		
PD-169-10004	6"		



78. Venturi

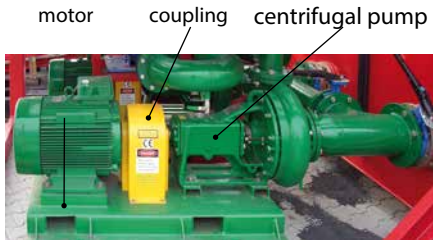
part no.	size Ø		
PD-169-10005	6"		



79. Centrifugal pump components

part no.	components		
PD-011-10000	electric motor 22.5 kW		
PD-012-10010	coupling		
PD-161-10000	centrifugal pump 6" x 5" x 14"		
PD-011-10001	electric motor 45 kW		
PD-011-10012	coupling		
PD-161-10002	centrifugal pump 4" x 3" x 13"		

Spare parts recycling units



80. Centrifugal pump components

part no.	components	
PD-011-10000	electric motor 22.5 kW	
PD-012-10010	coupling	
PD-161-10002	centrifugal pump 4" x 3" x 13"	
PD-011-10001	electric motor 45 kW	
PD-012-10011	coupling	
PD-161-10000	centrifugal pump 6" x 5" x 14"	
PD-011-10003	electric motor 55 kW	
PD-012-10012	coupling	
PD-161-10003	centrifugal pump 8" x 6" x 14"	



81. Cyclones

part no.	size Ø		
PD-169-10006	4"		
PD-169-10008	6"		
PD-169-10007	10"		

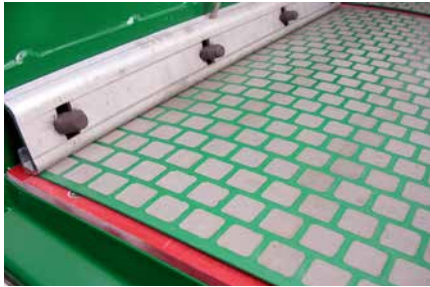


82. Vibration motor

part no.	nominal voltage	frequency	
PD-011-10002	380V	50 Hz	



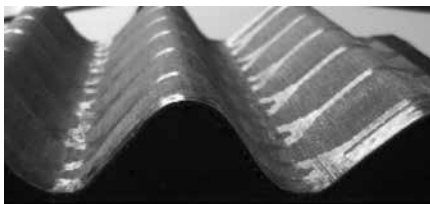
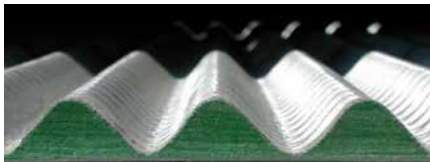
Spare parts recycling units



83. HP screens straight, type PWP

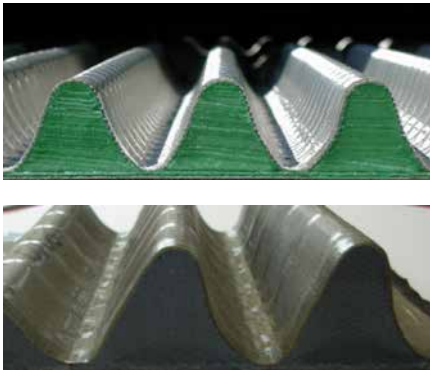
part no.	size		
PD-162-10000	HP-A 325 mm		
PD-162-10001	HP-A 270 mm		
PD-162-10002	HP-A 230 mm		
PD-162-10003	HP-A 200 F mm		
PD-162-10004	HP-A 200 mm		
PD-162-10005	HP-A 170 mm		
PD-162-10006	HP-A 140 mm		
PD-162-10007	HP-A 120 mm		
PD-162-10008	HP-A 100 mm		
PD-162-10009	HP-A 80 mm		
PD-162-10010	HP-A 70 mm		
PD-162-10011	HP-A 60 mm		
PD-162-10012	HP-A 50 mm		
PD-162-10013	HP-A 45 mm		
PD-162-10014	HP-A 40 mm		
PD-162-10015	HP-A 35 mm		

84. HP screens arched standard, type PMD



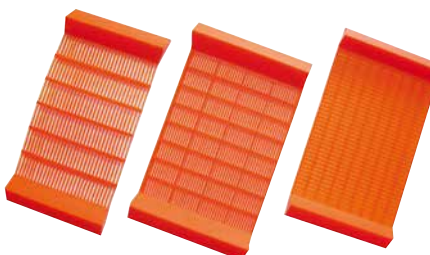
part no.	size		
PD-162-10016	HP-A 325 mm		
PD-162-10017	HP-A 270 mm		
PD-162-10018	HP-A 230 mm		
PD-162-10019	HP-A 200 F mm		
PD-162-10020	HP-A 200 mm		
PD-162-10021	HP-A 170 mm		
PD-162-10022	HP-A 140 mm		
PD-162-10023	HP-A 120 mm		
PD-162-10024	HP-A 100 mm		
PD-162-10025	HP-A 80 mm		
PD-162-10026	HP-A 70 mm		
PD-162-10027	HP-A 60 mm		
PD-162-10028	HP-A 50 mm		
PD-162-10029	HP-A 45 mm		
PD-162-10030	HP-A 40 mm		
PD-162-10031	HP-A 35 mm		

Spare parts recycling units



85. HP screens arched, type PMD+

part no.	size		
PD-162-10033	HP-A 325 mm		
PD-162-10034	HP-A 270 mm		
PD-162-10035	HP-A 230 mm		
PD-162-10036	HP-A 200 F mm		
PD-162-10037	HP-A 200 mm		
PD-162-10038	HP-A 170 mm		
PD-162-10039	HP-A 140 mm		
PD-162-10040	HP-A 120 mm		
PD-162-10041	HP-A 100 mm		
PD-162-10042	HP-A 80 mm		
PD-162-10043	HP-A 70 mm		
PD-162-10044	HP-A 60 mm		
PD-162-10045	HP-A 50 mm		
PD-162-10046	HP-A 45 mm		
PD-162-10047	HP-A 40 mm		
PD-162-10048	HP-A 35 mm		



86. Polyurethane screens, type TH

part no.	size		
PD-162-10049	DX-A 325 mm		
PD-162-10050	DX-A 270 mm		
PD-162-10051	DX-A 230 mm		
PD-162-10052	DX-A 200 F mm		
PD-162-10053	DX-A 200 mm		
PD-162-10054	DX-A 170 mm		
PD-162-10055	DX-A 140 mm		
PD-162-10056	DX-A 120 mm		
PD-162-10057	DX-A 100 mm		
PD-162-10058	DX-A 80 mm		
PD-162-10059	DX-A 70 mm		
PD-162-10060	DX-A 60 mm		
PD-162-10061	DX-A 50 mm		
PD-162-10062	DX-A 45 mm		
PD-162-10063	DX-A 40 mm		
PD-162-10064	DX-A 35 mm		





Service worldwide



Denmark: Guldbrand Entreprenørservice
Tvaervej 7, DK-6880 Tarm
Tel.: +45 / 973 725 00 Fax: +45 / 973 711 66
E-Mail: guldbrand@gg.dk



Great Britain: TT UK Ltd.
10 Windsor Road, GB-Bedford MK42 9SU
Tel.: +44 / 1234 342 566 Fax: +44 / 1234 352 184
E-Mail: info@tt-uk.com



Ireland: TT (Trenchless Technology) Ireland Ltd.
Mullaghboy Industrial Estate,
Athboy Road, EI-Navan Co Meath
Tel.: +353 / 907 5179 Fax: +353 / 907 5207
E-Mail: ttirelandltd@yahoo.ie



France and French speaking countries: Tracto-Techniques SARL
Avenue Benoit Frachon, ZI Boulazac
FR-24750 Boulazac
Tel.: +33 / 553 538 983 Fax: +33 / 553 093 941
E-Mail: ttf@tracto-techniques.fr



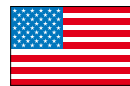
Italy: Volta Maschinen GmbH
Via Copernico 13a, IT-39100 Bozen
Tel.: +39 / 0471 546 100 Fax: +39 / 0471 546 199
E-Mail: info@volta-macchine.com



Norway: ABS Maskin AS
Strandveien 20 A, NO-3051 Mjøndalen
Tel.: +47 / 322 318 10 Fax: +47 / 322 318 11
E-Mail: roars@abs-maskin.no



Spain: Sistemas de Perforación S.L.
C/. Mayor, 31, ES-03769 Ráfol de Almunia
Tel.: +34 / 965 587 334 Fax: +34 / 965 587 260
E-Mail: jpereto@perforaciones.com



USA and Canada: TT Technologies:
2020 East New York St., US-Aurora, IL. 60504
Tel.: +1 / 630 851 8200 Fax: +1 / 630 851 8299
E-Mail: info@tttechnologies.com



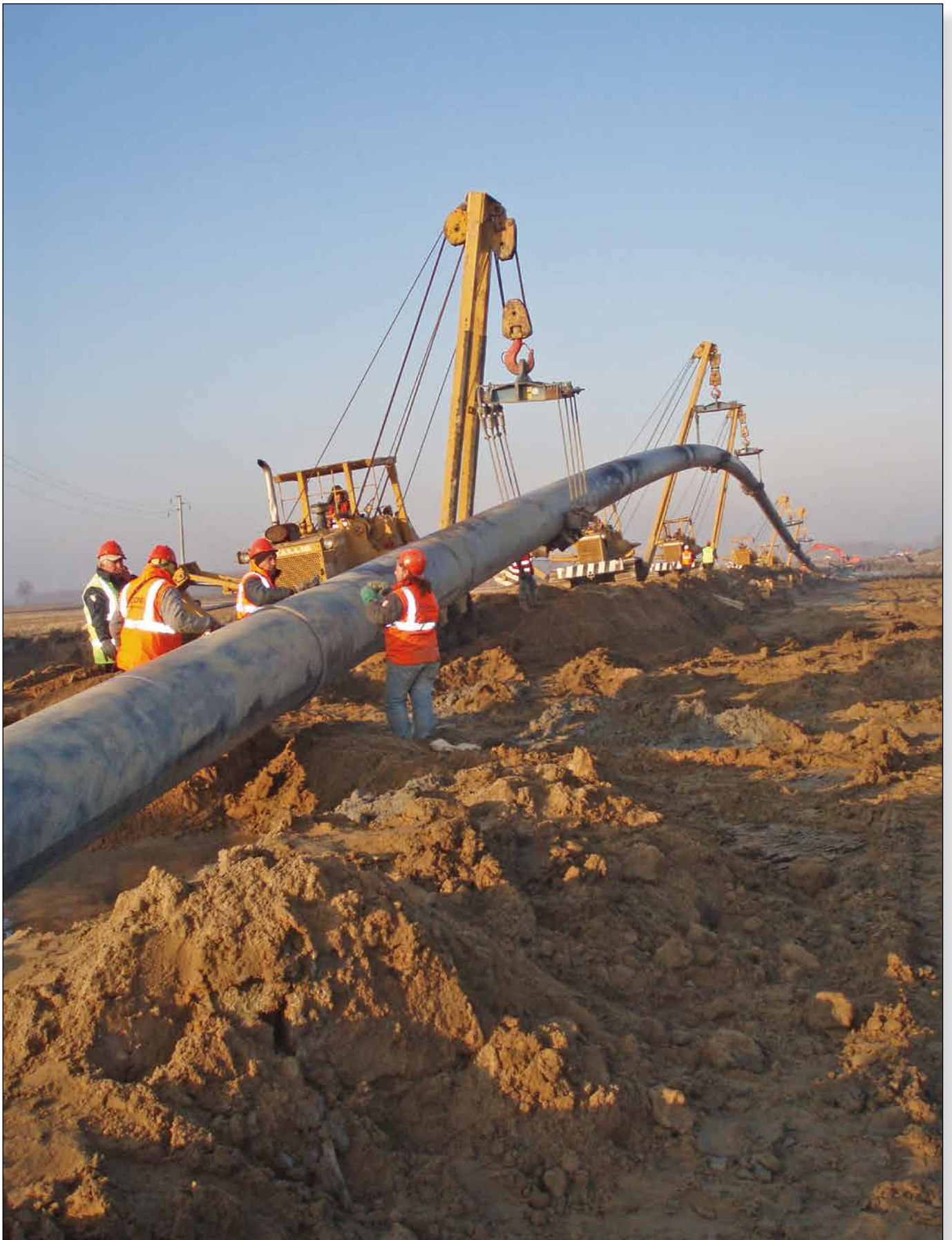
Countries of the Asia-Pacific-Region: TT ASIA PACIFIC PTY LTD.
Unit 2, Devlan Street, AU-Mansfield, Qld. 412
Tel.: +61 / 734 205 455 Fax: +61 / 734 205 855
E-Mail: info@tt-asiapacific.com



Taiwan: Grand Superior International Co. Ltd.
12 F-3, No. 383, Sec. 2, Bade Road
Songshan District, TW-Taipei City 10552,
Tel.: +86 / 2-2776-1116 Fax: +86 / 2-2776-0879
E-Mail: liu611027@yahoo.com.tw



China: Shanghai Jardine Eng. Co. Ltd.
Room H-K Floor 17, Cross Region Plaza
No. 899 Ling Ling Road, ROC- Shanghai 200030
Tel. +86 / 216 218 3888 Fax: +86 / 216 360 3938
E-Mail: raylam30@hotmail.com





PRIME DRILLING GmbH
Ludwig-Erhard-Straße 4
D-57482 Wenden-Gerlingen
Tel. +49 (0) 2762 930 96-0
Fax +49 (0) 2762 930 96-50
E-Mail: info@prime-drilling.de
www.prim-drilling.de

PRIME DRILLING® has been manufacturing high-quality Horizontal Directional Drilling Rigs and components on its 4,000 m² production area and 800 m² office area with more than 70 employees since the year 2000.

03/2016

